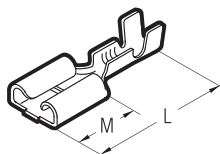
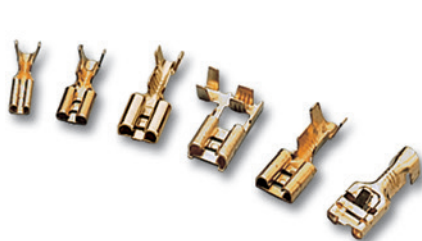


OPEN BARREL CONNECTORS for copper conductors

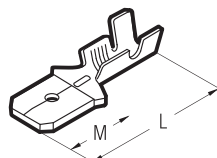
FEMALE CONNECTORS OPEN BARREL



Conductor Size sqmm (AWG)	Ref	Tab mm	M mm	L mm	Quantity box/bag
0,5÷1 (20÷17)	RN-FA 305	2,8 x 0,5	6,3	15,0	6.000/100
	RN-FA 405	4,8 x 0,5	6,3	15,0	5.000/100
	RN-FA 608	6,3 x 0,8	7,7	19,0	3.000/100
1÷2,5 (17÷14)	BN-FA 608	6,3 x 0,8	7,7	19,0	3.000/100
	* BN-FAB 608	6,3 x 0,8	7,7	15,5	1.000/100
	** BN-FAR 608	6,3 x 0,8	7,7	19,0	3.000/100

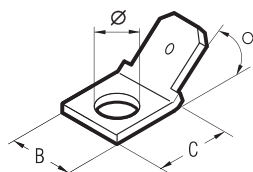
**flag type **with retainer*

MALE CONNECTORS OPEN BARREL



Conductor Size sqmm (AWG)	Ref	Tab mm	M mm	L mm	Quantity box/bag
0,5÷1 (20÷17)	RN-MA 305	2,8 x 0,5	5,8	13,0	6.000/100
	RN-MA 405	4,8 x 0,5	6,3	17,3	5.000/100
	RN-MA 608	6,3 x 0,8	7,9	19,7	4.000/100
1÷2,5 (17÷14)	BN-MA 608	6,3 x 0,8	7,9	20,0	4.000/100

MALE TABS FOR BOARD MOUNTING



Ref	Tab mm	Ø stud mm	B mm	C mm	α	Quantity box/bag
MP 608	6,3 x 0,8	4	8	8,5	0°	5.000/100
MP 608/45	6,3 x 0,8	4	8	8,5	45°	6.000/100
MP 608/90	6,3 x 0,8	4	8	8,5	90°	5.000/100
* MP 608D	6,3 x 0,8	5	8	14	0°	5.000/100

**double tab*

Technical details:

- Manufactured from Brass strip P-Cu Zn 30 UNI 4895/1962 (Cu Zn 30 DIN 17660/1974 ; Cu Zn 30 NFA51-101/1977)
- The operating temperature range is – 40 to + 125°C.

Cembre SpA

Via Serenissima, 9 - 25135 Brescia (Italia)
Tel.: +39 030 36921 - Fax: +39 030 3365766
www.cembre.com - E-mail: info@cembre.com